

MicroStep[®]

spol. s r.o.



OxyCut / PlasmaCut

- OxyCut is a high performance and reliable CNC cutting machine designed for fully automatic oxyfuel cutting or a combination of oxyfuel and plasma cutting
- The machine is equipped with advanced gas control system with automatic setting of cutting parameters
- Optional version of the machine – PlasmaCut – is equipped with high precision linear guidelines to enable high precision plasma cutting
- Both versions can be equipped with a pipe positioner for cutting pipes up to \varnothing 1000 mm
- Wide range of optional accessories offers combination of various technologies
- Precision cutting with high-definition plasma sources as well as with standard air plasma sources
- Simultaneous oxyfuel cutting with 5 torches maximizes customer's productivity
- Efficient and user-friendly PC-based CNC control system iMSNC[®]
- Integrated remote diagnostics utilities
- Meeting of comprehensive safety and environmental standards





OxyCut / PlasmaCut



Technical parameters*

Working length	3000 – 30000 mm
Working width	1500 – 4000 mm
Max. number of tool stations	5
Max. thickness of material cut by oxyfuel	150 mm (optionally 200 mm)
Positioning speed	up to 20 m/min
Control system	MicroStep iMSNC®
Type of guides in X direction	rails (linear guidelines for PlasmaCut)
Type of guides in Y direction	linear guidelines

* depends on the machine configuration

MicroStep®
spol. s r.o.

MicroStep spol. s r.o. tel.: +421 2 32 27 72 00
Vajnorská 158 fax: +421 2 32 27 70 01
831 04 Bratislava www.microstep.eu
Slovakia e-mail: marketing@microstep.sk



www.microstep.eu

Easy to operate

MicroStep iMSNC® is one of the most advanced control systems in CNC cutting machinery. The system provides easy, user friendly and thus reliable operation of cutting machines via modern user interfaces: a standalone operator console with TFT touch screen and one or two control panels with LCD displays on the sides of the gantry. To achieve maximum utilization and flexibility of machine operation, a standalone operator console offers the possibility to prepare and edit cutting plans simultaneously with the cutting process. Since the machine, control system iMSNC® and CAM software AsperWin® are from one producer – MicroStep – it allows to implement also non-standard requests and develop custom solutions.

- Integrated database of tool parameters
- Multi-tool operation
- Automatic assignment of tool parameters to processed material
- Full network connectivity
- Remote diagnostics and assistance
- Parametrical dynamic piercing
- Zone management with batch cutting
- Monitoring of consumable life
- Advanced servicing software tools

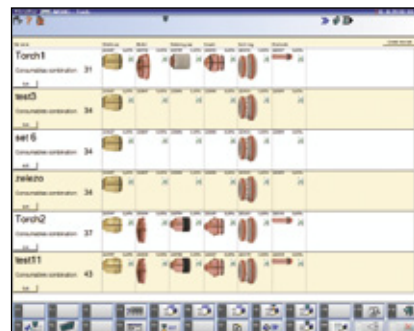
Intranet applications

Intranet applications enable comfortable integration of the machine into production workflow and provide access to the machine via SQL databases and web services. MicroStep iMSNC® includes a novel web-based interface for accessing each machine from the company intranet via a web browser. Each machine has its own home page which serves as a gateway for intranet applications.

Management of Cutting Programs (MCP) – remote management of cutting programs allows to define priorities and relations between cutting programs and materials, and to distribute the cutting tasks to several machines

EkolInfo – evaluation of machine operation costs for a particular cutting program

Machine Info – monitoring of machine and operator activities that enables to assign performance information to work shifts and to create specific technological records



OPTIONAL ACCESSORIES



Plasma



Tilting tool station



Oxyfuel



Gm tool station



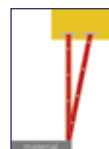
Pipe cutting device



Inkjet



MicroPunch



Automatic plate alignment



CCD camera



Second touchscreen on gantry

The descriptions, technical data and illustrations contained in this document are provided for guidance purpose only and are non-binding. The manufacturer reserves the right to make changes without notification.