

MicroStep®

spol. s r.o. AquaCut 1501.25WW



AquaCut

- The AquaCut type machines are based on a precision engineered and compact framed construction and are optimally adjusted to waterjet cutting purposes for metal and non-metal materials
- Optional 5-axis cutting head for accurate bevel and 3D cutting
- Additional plasma cutting stations
- Drilling and tapping heads with automatic tool change
- Camera system to take templates into the CNC or nesting system
- Excellent motion dynamics
- Efficient and user-friendly PC-based CNC control system iMSNC®
- Integrated remote diagnostics utilities
- Manual control units mounted on the gantry providing all positioning and technology control functions
- Environmentally safe





AquaCut



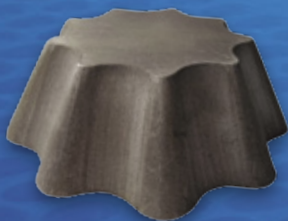
Technical parameters*

Working length	1 500 – 18 000 mm
Working width	1 500 – 4 000 mm
Max. number of tool stations	4
Max. thickness of material cut by waterjet	150 mm
Positioning speed	up to 50 m/min
Control system	MicroStep iMSNC®
Type of the guides in X direction	linear guidelines
Type of the guides in Y direction	linear guidelines

* depends on the machine configuration.

MicroStep®
spol. s r.o.

MicroStep spol. s r.o. tel.: +421 2 32 27 72 00
Vajnorská 158 fax: +421 2 32 27 70 01
831 04 Bratislava www.microstep.eu
Slovakia e-mail: marketing@microstep.sk



www.microstep.eu

Easy to operate

MicroStep iMSNC® is one of the most advanced control systems in CNC cutting machinery. The system provides easy, user friendly and thus reliable operation of cutting machines via modern user interfaces: a standalone operator console with TFT touch screen and one or two control panels with LCD displays on the sides of the gantry. To achieve maximum utilization and flexibility of machine operation, a standalone operator console offers the possibility to prepare and edit cutting plans simultaneously with the cutting process. Since the machine, control system iMSNC® and CAM software AsperWin® are from one producer – MicroStep – it allows to implement also non-standard requests and develop custom solutions.

- Integrated database of tool parameters
- Multi-tool operation
- Automatic assignment of tool parameters to processed material
- Full network connectivity
- Remote diagnostics and assistance
- Zone management with batch cutting
- Advanced servicing software tools

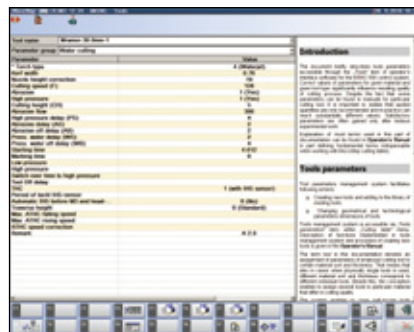
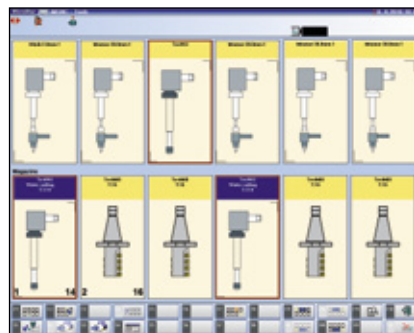
Intranet applications

Intranet applications enable comfortable integration of the machine into production workflow and provide access to the machine via SQL databases and web services. MicroStep iMSNC® includes a novel web-based interface for accessing each machine from the company intranet via a web browser. Each machine has its own home page which serves as a gateway for intranet applications.

MicroStep Production Management (MPM) – adds computer-aided process planning (CAPP) capabilities to MicroStep solutions. An integrated system of order processing, nesting, stock control, machine operation planning and evaluation helps to reduce work-in-progress, to save material, and to eliminate operator errors.

EkolInfo – evaluation of machine operation costs for a particular cutting program.

Machine Info – monitoring of machine and operator activities that enables to assign performance information to work shifts and to create specific technological records.



OPTIONAL ACCESSORIES



Waterjet



Waterjet rotator



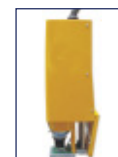
Waterjet Multi-head



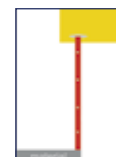
Plasma



Drilling and tapping unit



CCD camera



Laser pointer

The descriptions, technical data and illustrations contained in this document are provided for guidance purpose only and are non-binding. The manufacturer reserves the right to make changes without notification.